

NE Weidler St & 24th Ave Safety

Intervention



SGNA
03.17.25

Persistent Safety

Issues

- Dozens of reported cases over the years of high-speed, road departure crashes into trees, yards, and houses at end of Weidler St
- Speeds are high on Weidler St approaching sharp curve at 24th Ave that was not designed for high-speed turns
- Recently a driver crashed their car into house and ignited gas line, triggering an explosion and house fire
- Upcoming repaving project is an opportunity to address issues in a timely and cost-effective way while also addressing other long-standing community needs

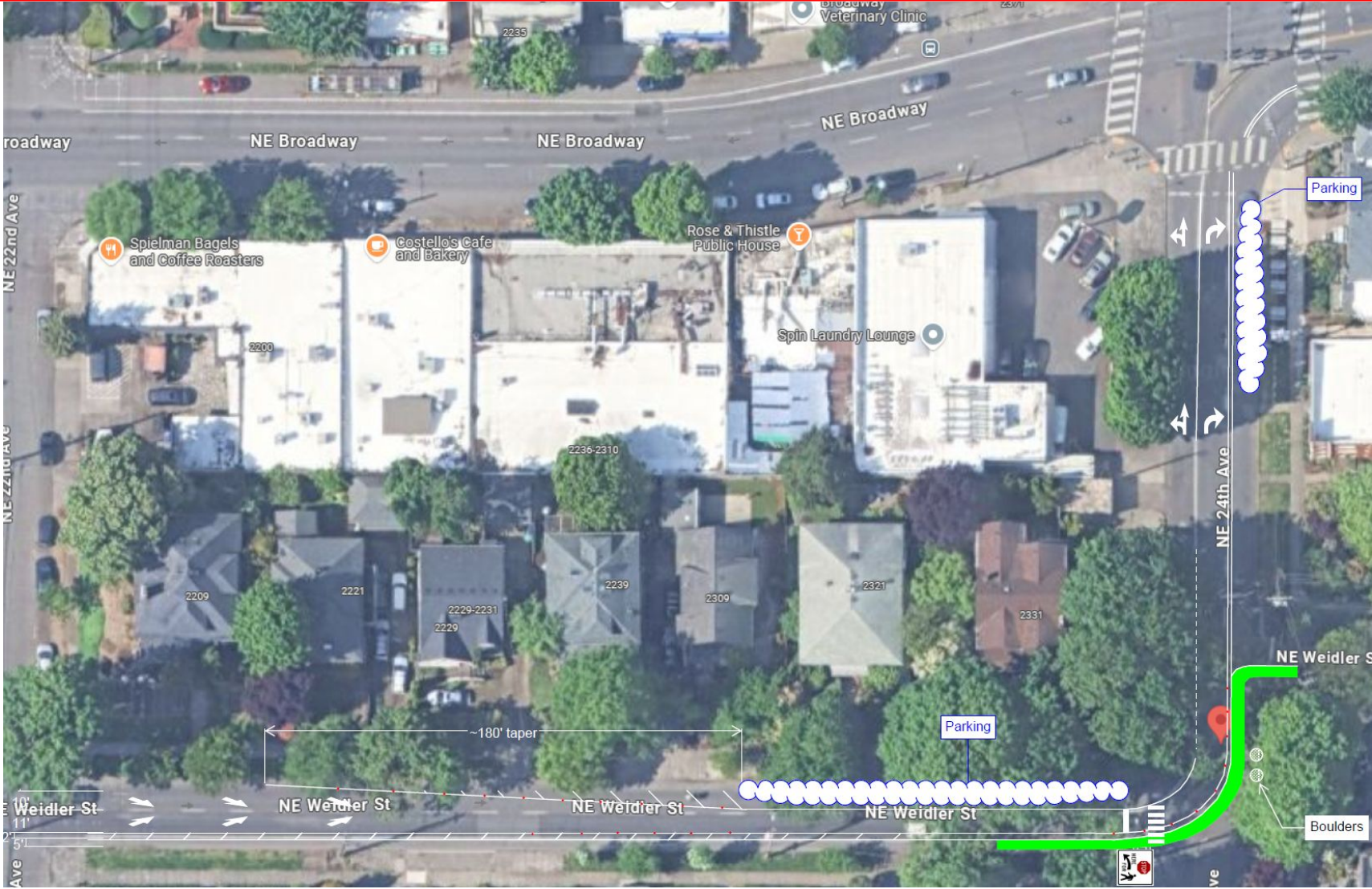
KGW8.

Portland residents demand action after car strikes home

Neighbors estimate this to be the 30th collision at the property in the past three decades, due to cars taking a curve at an intersection near the home too fast.



Proposed Safety Intervention



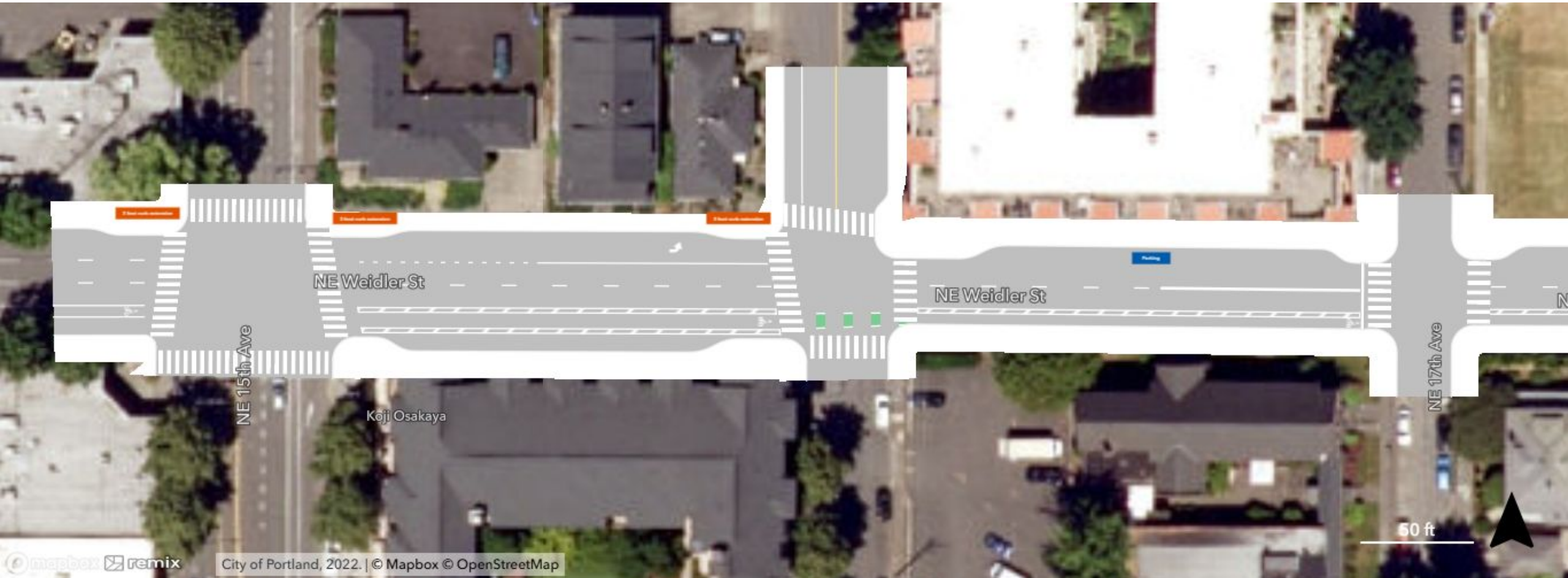
Proposed Safety Intervention



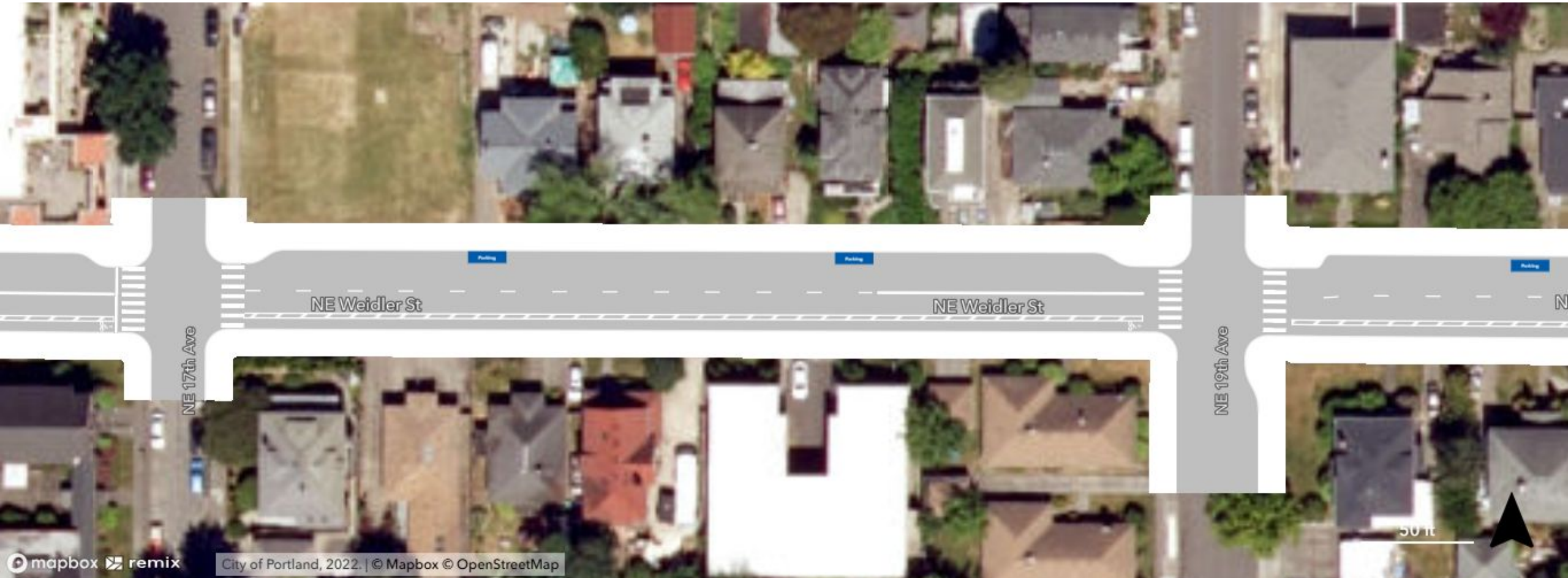
Proposed Safety Intervention

- “Zipper merge” eastbound just past 22nd Ave, one lane continues through curves to Broadway, then second lane is reintroduced (no significant traffic impacts expected)
- Posted speed limit lowered from 30 to 25 mph, plus speed reader board with 15 mph advisory speed limit around curves
- Wider buffered bike lane with green paint around curve at 24th Ave
- Marked pedestrian crosswalk at Weidler & 24th
- On-street parking added on Weidler, 24th, and Broadway, narrowing roadway, slowing traffic, and buffering pedestrians and outdoor dining from traffic
- Boulders and reflective signage added at end of Weidler St in front of house

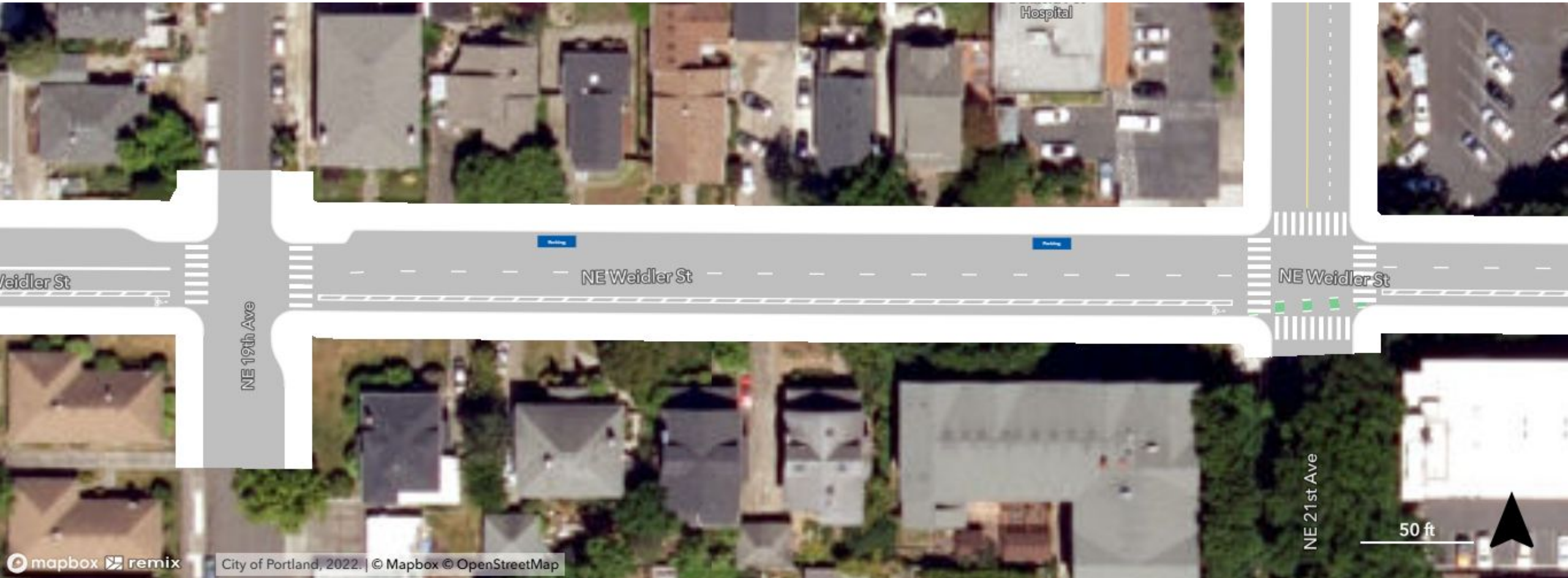
Other Improvements from 15th to 24th Ave



Other Improvements from 15th to 24th Ave



Other Improvements from 15th to 24th Ave



Other Improvements from 15th to 24th Ave



Questions & Discussion