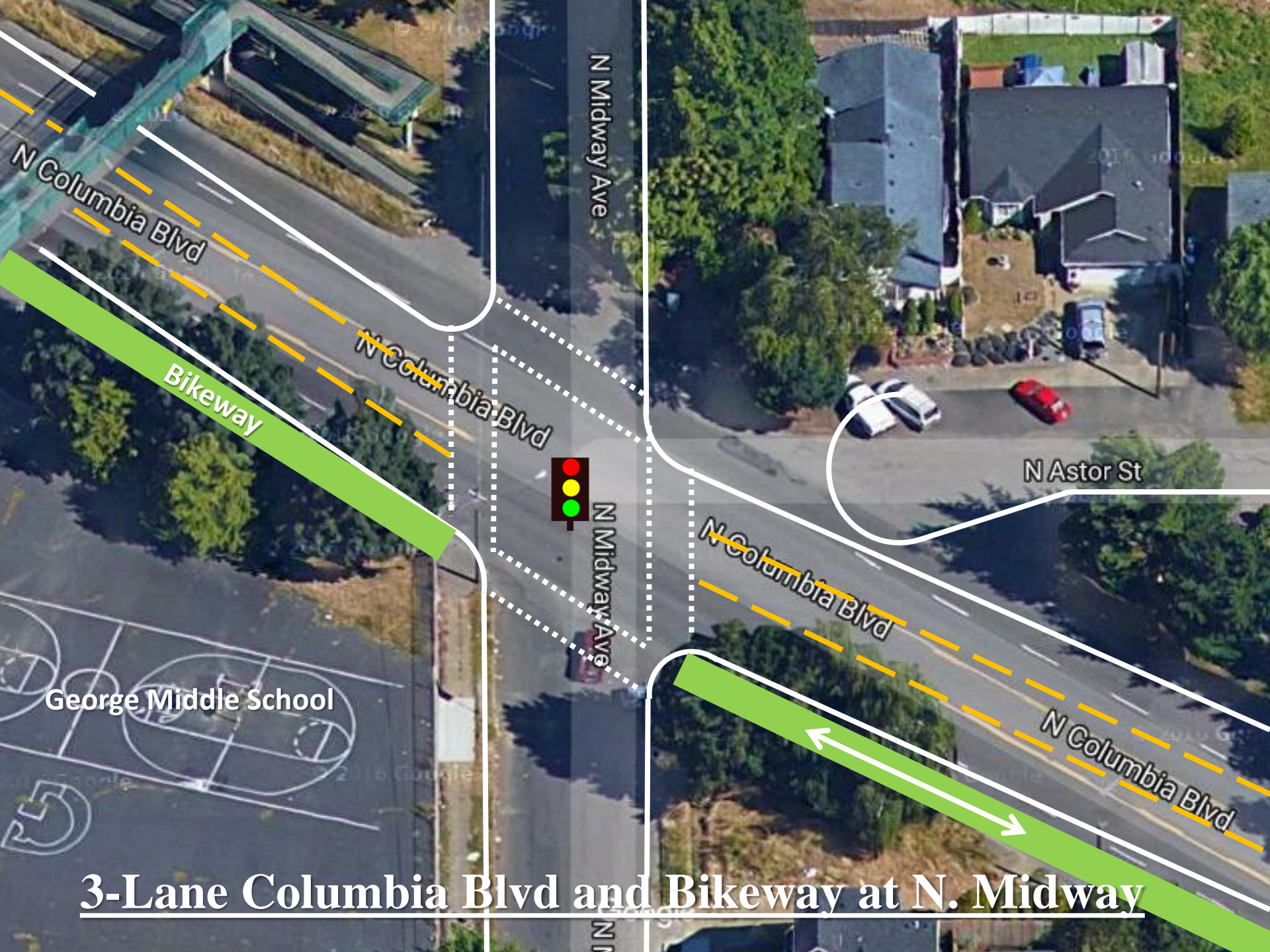


Columbia Blvd. Safety Plan

(2.2-mile segment between Burgard/Lombard and Portland Rd/Columbia Way)

1. **Reduce Speed Limit** from 40-MPH to 35-MPH. This adds only 25-seconds running time.
2. **Restripe Roadway** from 5-lanes to 3-lanes. This highway is overbuilt for it's traffic demand of only 6,000 average daily trips. Fewer lanes will discourage speeding.
3. **Install Traffic signal** at N. Midway and reconfigure intersection.
4. **Construct Protected Two-way Bikeway** along the south side of Columbia Blvd providing the missing link between the Lombard Trail Path and the Peninsula Crossing Trail. It will allow safe bike access to and from Kelley Point, Chimney and Pier Parks as well as George Middle School and the Pier Park Apartment Complex.
5. **Encourage TriMet** to provide all-day, 7 day -a- week bus service on Columbia Blvd and N. Lombard between the Rivergate Industrial Area and the Parkrose Transit Center. This line could connect to two MAX Lines and about a dozen bus routes providing transit access to thousands of jobs in the Columbia Corridor Industrial Area.



N Midway Ave

N Columbia Blvd

Bikeway

N Columbia Blvd



N Midway Ave

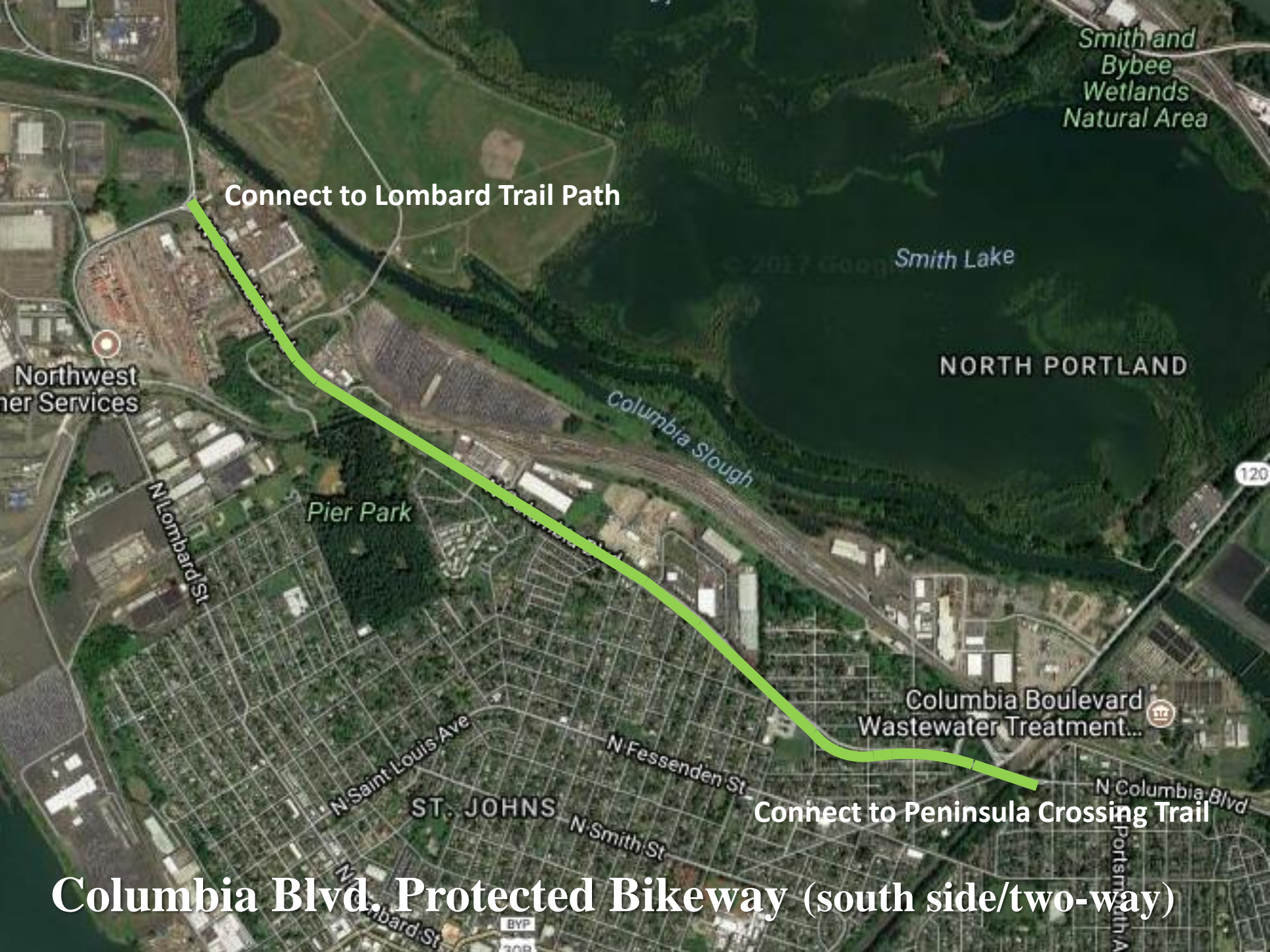
N Astor St

N Columbia Blvd

N Columbia Blvd

George Middle School

3-Lane Columbia Blvd and Bikeway at N. Midway



Smith and Bybee Wetlands Natural Area

Connect to Lombard Trail Path

Smith Lake

NORTH PORTLAND

Northwest Paper Services

Columbia Slough

Pier Park

N Lombard St

Columbia Boulevard Wastewater Treatment...

N Saint Louis Ave

N Fessenden St

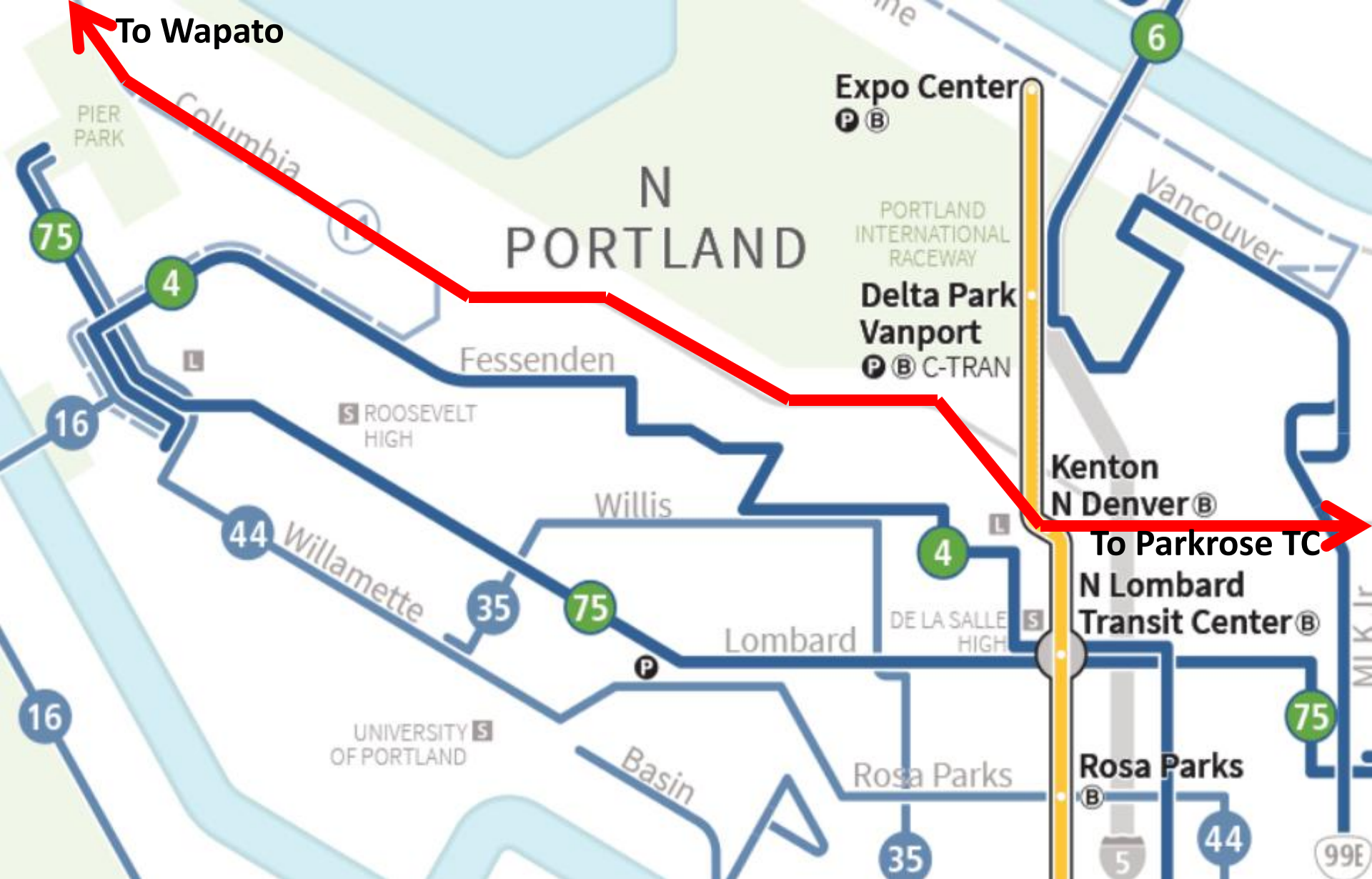
ST. JOHNS

N Smith St

Connect to Peninsula Crossing Trail

N Columbia Blvd

Columbia Blvd. Protected Bikeway (south side/two-way)



***Proposed Columbia Boulevard Bus Line**

*By: Jim Howell 11/27/17 jimhowell89@hotmail.com

Columbia Blvd. Safety Plan

(2.2-mile segment between Burgard/Lombard and Portland Rd/Columbia Way)

1. **Reduce Speed Limit** from 40-MPH to 35-MPH. This adds only 25-seconds running time.
2. **Restripe Roadway** from 5-lanes to 3-lanes. This highway is overbuilt for it's traffic demand of only 6,000 average daily trips. Fewer lanes will discourage speeding.
3. **Install Traffic signal** at N. Midway and reconfigure intersection.
4. **Construct Protected Two-way Bikeway** along the south side of Columbia Blvd providing the missing link between the Lombard Trail Path and the Peninsula Crossing Trail. It will allow safe bike access to and from Kelley Point, Chimney and Pier Parks as well as George Middle School and the Pier Park Apartment Complex.
5. **Encourage TriMet** to provide all-day, 7 day -a- week bus service on Columbia Blvd and N. Lombard between the Rivergate Industrial Area and the Parkrose Transit Center. This line could connect to two MAX Lines and about a dozen bus routes providing transit access to thousands of jobs in the Columbia Corridor Industrial Area.